

F6

Fetal & Maternal Monitor

Mounting Solutions



Trolley

Wall Mount

Specification

Physical Characteristics		Display Specifications	
Dimensions:	347 mm x 330 mm x 126 mm	Display:	10.1" color TFT-LCD
Weight:	Approx. 6 kg	Resolution:	RGB 800 (W) x 480 (H)
Ultrasound		DECG	
Technique:	Ultrasound Pulse Doppler with autocorrelation	Technique:	Peak-peak detection technique
Pulse Repetition Rate:	2 kHz	DFHR Measurement Range:	30 bpm~240 bpm
Ultrasound Frequency:	(1.0 ±10%) MHz	Resolution:	1 bpm
FHR Measurement Range:	50 bpm~240 bpm	Accuracy:	±1 bpm
Resolution:	1 bpm		
Accuracy:	±2 bpm		
Iob:	<10 mW/cm ²		
TOCO		IUP	
TOCO Range:	0%~100%	Pressure Range:	0~100 mmHg
Non-linear Error:	≤ ±10%	Non-linear Error:	≤ ±3 mmHg
Resolution:	1%	Resolution:	1%
Zero Mode:	Automatic/Manual	Zero Mode:	Automatic/Manual
AFM		Recorder	
Technique:	Pulsed Doppler ultrasound	Recording Paper:	Z-fold, 150/152 mm thermo-sensitive paper
Range:	0~100 (%)	Recording Speed:	1/2/3 cm/min, 25 mm/sec for history data
Resolution:	1%		
Power Supply			
Operating Voltage:	100 V-240 V~		
Operating Frequency:	50/60 Hz		
Battery:	14.8 V/4400 mAh rechargeable Li-ion battery		

Barlor **medizintechnik**
 Kösliner Str.6 • 58515 Lüdenscheid
 Vertrieb- und Service:
 CTG - Fetalmonitor
 Telefon: 02351- 668061
 Telefax: 02351- 6717089
 Mobil : 0173- 7201634
 Internet: www.ctg-shop.de



F6

Fetal & Maternal Monitor



EDAN Edan Instruments, Inc.

• 3/F-B, Nanshan Medical Equipment Park, Nanhai Rd 1019#, Shekou, Nanshan, Shenzhen, 518067 P.R. China
 • Tel: +86-755-26898326 • Fax: +86-755-26898330 • www.edan.com.cn • Email: info@edan.com.cn
 • All rights reserved. Features and specifications are subject to change without notice.



ENG-OB & GYN-F6-V2.4-20120824

Care for Health



F6 Fetal & Maternal Monitor

User-friendly design

- 10.1" foldable TFT color screen
- Compact and portable design
- Probe rack for easy positioning of the transducers

Easy to Read & Operate

- Numeric and waveform display of FHR and TOCO
- Simplified workflow with various short-cuts
- Easy to use menu system ensures fast access to important functions

Advanced FHR Detection Technology

- 1 MHz waterproof sensitive transducer
- Signals Overlap Verification to differentiate twins FHR
- FHR signal quality indicator helps optimize the probe position

Powerful Data Management

- 60 hours built-in memory for seamless monitoring
- MFM-CNS network for remote monitoring
- Insight software for data management



Foldable color TFT screen

F6 supports four viewing angles: 15°, 30°, 45°, 60° that give better optic angles for care givers.



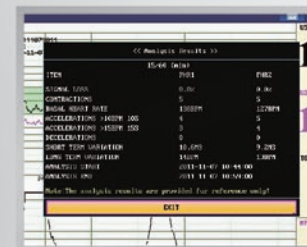
Quick setup and simplified workflow

Functional keys and knob provide various short-cuts to achieve functions for clinical use. The 'START' button could be configured to integrate patient info and printing. This could help the doctor to simplify the workflow and work with 1 button only.



Various printing options

F6 is compatible with 152 and 150 mm thermal printing paper in either American or International standard. The recording information includes patient info, FHR waveform, TOCO waveform, Fetal movement and so on.



Built-in Antepartum CTG Analysis

The antepartum CTG analysis provides objective and numerical assessment of CTG for the caregivers' reference and ensures easy access to read FHR patterns.

